



**Plant a tree today, make a difference tomorrow!**

**Project Plant It!** is a community effort, sponsored by Dominion Energy, designed to educate children, plant trees and wildflowers, and improve the environment. Trees help moderate climates, improve air quality, absorb carbon, harbor wildlife, prevent soil erosion and reduce heating and cooling costs.

### How to plant your tree seedling outdoors

- Select a sunny location with moist, well-drained soil.
- Remove all weeds, grass and other debris from a 1-foot circle around the site.
- Dig a saucer-shaped hole 6 inches across. This lets the roots spread as the tree grows.
- Turn the soil in your hole approximately 6 inches deep and break up any big chunks.
- Take the plastic wrapper off the root plug.
- Place the root plug just below the surface of the soil, so that the roots are completely covered.
- Make sure you do not plant the seedling too deep. About an inch of soil on top is plenty.
- Water the seedling and, if possible, cover your planting site with 2-3 inches of mulch.
- Do not let the mulch touch the tree. This helps keep disease away from the tree.
- Water your seedling when it gets dry every week or two during the first year.

### How to grow your tree seedling indoors in a container

- Choose a 1-gallon container with drainage and enough room for the roots to grow.
- Add soil.
- Take the plastic wrapper off the root plug.
- Place the root plug just below the surface of the soil so that the roots are completely covered.
- Make sure you do not plant the seedling too deep. About an inch of soil on top is plenty.
- Keep your seedling watered about every week as it gets dry.
- This is an outdoor tree. Plant outside in the ground as soon as possible.

### Tree Seedling Type

#### **Eastern Redbud** *Cercis canadensis*

Found as both a native forest tree and a landscape ornamental, the Eastern Redbud can grow to 20-30 feet tall with a 25-35-foot spread. It is a striking tree with visual appeal all year long: Bright rosy pink flowers appear in spring, and the blooms give way to colorful foliage with reddish-brown leaves that change to dark green then to yellow in fall. The tree forms a spreading, graceful crown and grows in full sun or light shade. (Partial shade is preferred in windy, dry areas.)



### Safety Tips

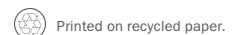
- To ensure safety, always call **811** before you dig into the ground.
- Do not plant trees underneath or within **25 feet** of an overhead power line.
- Do not plant trees on top of underground power, cable, phone or gas lines.

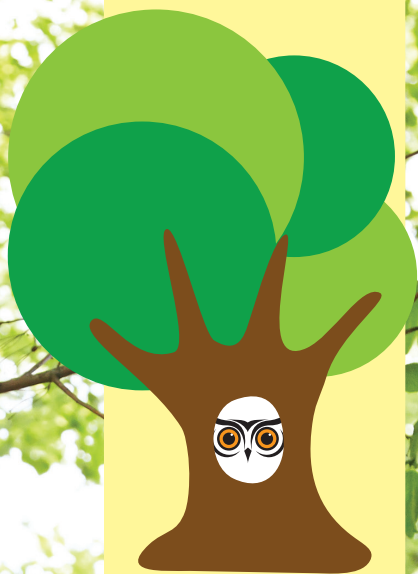


**ProjectPlantIt.com**



In partnership with the





**MATURE  
TREES  
ARE  
VALUABLE  
TREES**

Sponsored by TreeStewards  
under a grant from the  
Arlington County  
Tree Canopy Fund.

**It's no secret  
that large,  
mature trees  
add comfort  
and charm to  
our lives.**

They shade our decks, lower electricity bills, increase property values, and reduce flooding risks. However, as our region continues to grow, there's more concrete and fewer trees and green space. As a home owner, *you* can help preserve the unique character that makes our region such a desirable place to live.

In just a few simple steps you can keep your large trees healthy and strong, and enjoy the benefits that *only* mature trees can offer. Learn how on the reverse side.



## Keep your gentle giants healthy and beneficial.

As trees age, a branch here or there may need to be pruned or removed to keep the tree healthy and strong. But, just because a branch or limb might have gone bad, that doesn't mean the whole tree should be removed. Just because you have a cut on your finger, that doesn't mean the whole arm needs to be amputated!

Follow these simple steps, as recommended by arborists and tree stewards:

1. Remove ivy from your tree.
2. Large trees don't need mulch. If you do mulch, keep mulch 3-inches from the tree trunk and never more than 3-inches thick.
3. Construction is one of the biggest threats to mature trees. If you are considering construction anywhere in your yard, contact a certified arborist first so you can avoid damage to tree roots.



You wouldn't let just anyone take care of your pets, and you shouldn't let just anyone take care of your trees. A certified arborist can provide reliable, clear information and directions for keeping your trees healthy for years to come.

**To find a certified arborist, visit [goodtreecare.com](http://goodtreecare.com)**



**For additional information on caring for mature trees visit [TreeStewards.org](http://TreeStewards.org)**

**MATURE  
TREES  
ARE  
VALUABLE  
TREES**  
[TreeStewards.org](http://TreeStewards.org)

Planting new trees is great, yet when it comes to maximizing the incredible benefits of trees, nothing beats caring for existing mature trees.

According to the US Forest Service, trees properly placed around your home can reduce your air conditioning needs by 30% and save 20% to 50% in heating costs. The US Department of Energy says three properly placed trees could save you \$100 to \$250 a year.

Money may not grow on trees, but it certainly grows with them! 98% of realtors report that mature trees affect the sale of homes. Depending on your market, mature trees can account for as much as 10% of your assessed property value, according to the US Forest Service. Cutting down a mature tree wastes the equity you've accrued by having it.



## Arlington County Tree Canopy Fund

### Overview

The goal of the Tree Canopy Fund is to increase Arlington County's tree canopy. Through this program, owners of private property, including single-family homes, townhouses, condos, and places of worship, can apply to get a native tree planted on their property. Grants are also available for public education projects and maintenance of champion trees. The fund is administered by EcoAction Arlington and the Arlington County Urban Forestry Commission with support from the TreeStewards.

### Program Accomplishments

Since the Tree Canopy Fund was established, we have planted more than 2,200 trees in yards, homeowner's associations, apartment properties, and places of worship.

### How Does It Work?

Property owners interested in participating must apply to this program online and applications are for planting are accepted twice a year, in June and in December. Applicants must include their selection of tree species from the published list of species available. Proposals must include a description and photo of exact planting location and an overview of how the project meets the priorities of the Tree Canopy Fund. Technical assistance for tree selection is available. Once awards are made, EcoAction Arlington oversees a landscaping contractor who does all the planting and provides a one-year guarantee. Property owners are responsible for maintenance and watering of the trees.

### More Information

EcoAction Arlington  
3308 S. Stafford Street  
Arlington, VA 22206  
[www.ecoactionarlington.org/trees](http://www.ecoactionarlington.org/trees)  
703-228-6427  
[trees@ecoactionarlington.org](mailto:trees@ecoactionarlington.org)  
Combined Federal Campaign #83504

